

STRAIGHT & RIGHT ANGLE PLUG - MILITARY CLAMP FOR FLEXIBLE CABLE

FIG.	POL (Z)	CABLE GROUP	MATERIAL	BODY PLATING	CONTACT PLATING	MOUNTING	DIM "A"	DIM "B"	DIM "C"	PART NUMBER
1	-	09	BRASS	NICKEL	GOLD - C	-	1.422 [36.1]	-	.500 [12.7]	25M-1NN-409-00N
1	-	34	BRASS	NICKEL	GOLD - C	-	1.422 [36.1]	-	.750 [19.1]	25M-1NN-434-00N
1	-	12	BRASS	NICKEL	GOLD - C	-	1.422 [36.1]	-	.750 [19.1]	25M-1NN-412-00N
1	-	13	BRASS	NICKEL	GOLD - C	-	1.422 [36.1]	-	.500 [12.7]	25M-1NN-413-00N
1	-	14	BRASS	NICKEL	GOLD - C	-	1.422 [36.1]	-	.500 [12.7]	25M-1NN-414-00N
1	-	21	BRASS	NICKEL	GOLD - C	-	1.422 [36.1]	-	.500 [12.7]	25M-1NN-421-00N
2	-	09	BRASS	NICKEL	GOLD - C	-	1.300 [33.0]	1.600 [40.6]	.500 [12.7]	25M-2NN-409-00N
2	-	34	BRASS	NICKEL	GOLD - C	-	1.300 [33.0]	1.600 [40.6]	.750 [19.1]	25M-2NN-434-00N
2	-	12	BRASS	NICKEL	GOLD - C	-	1.300 [33.0]	1.600 [40.6]	.750 [19.1]	25M-2NN-412-00N
2	-	13	BRASS	NICKEL	GOLD - C	-	1.300 [33.0]	1.600 [40.6]	.500 [12.7]	25M-2NN-413-00N
2	-	14	BRASS	NICKEL	GOLD - C	-	1.300 [33.0]	1.600 [40.6]	.500 [12.7]	25M-2NN-414-00N
2	-	21	BRASS	NICKEL	GOLD - C	-	1.300 [33.0]	1.600 [40.6]	.500 [12.7]	25M-2NN-421-00N

FIG. 1

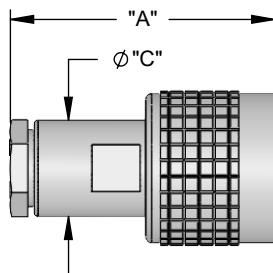
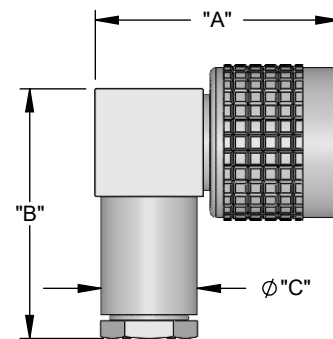


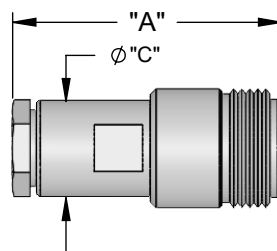
FIG. 2



STRAIGHT JACK - MILITARY CLAMP FOR FLEXIBLE CABLE

FIG.	POL (Z)	CABLE GROUP	MATERIAL	BODY PLATING	CONTACT PLATING	MOUNTING	DIM "A"	DIM "B"	DIM "C"	PART NUMBER
3	-	09	BRASS	NICKEL	GOLD - C	-	1.410 [35.8]	-	.500 [12.7]	25F-1NN-409-00N
3	-	34	BRASS	NICKEL	GOLD - C	-	1.410 [35.8]	-	.750 [19.1]	25F-1NN-434-00N
3	-	12	BRASS	NICKEL	GOLD - C	-	1.410 [35.8]	-	.750 [19.1]	25F-1NN-412-00N
3	-	13	BRASS	NICKEL	GOLD - C	-	1.410 [35.8]	-	.500 [12.7]	25F-1NN-413-00N
3	-	14	BRASS	NICKEL	GOLD - C	-	1.410 [35.8]	-	.500 [12.7]	25F-1NN-414-00N
3	-	21	BRASS	NICKEL	GOLD - C	-	1.410 [35.8]	-	.500 [12.7]	25F-1NN-421-00N

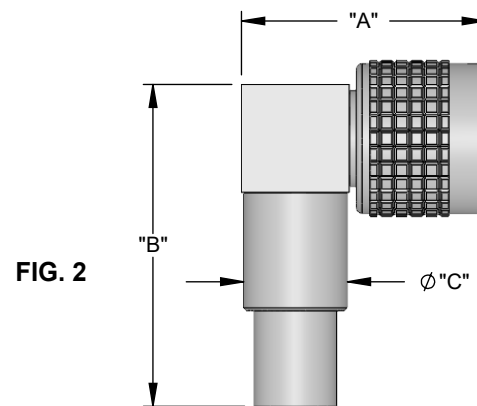
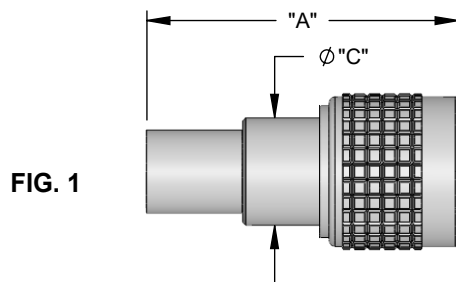
FIG. 3



NOTES: 1. "C" CODING IN THE "CONTACT PLATING" COLUMN DESIGNATES A CAPTIVE CONTACT DESIGN.

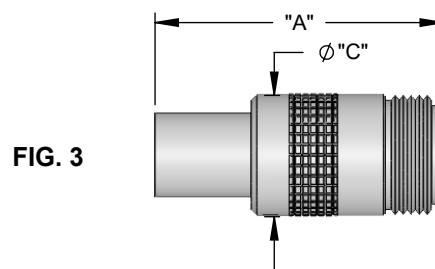
STRAIGHT & RIGHT ANGLE PLUG - CRIMP TYPE FOR FLEXIBLE CABLE

FIG.	POL (Z)	CABLE GROUP	MATERIAL	BODY PLATING	CONTACT PLATING	MOUNTING	DIM "A"	DIM "B"	DIM "C"	PART NUMBER
1	-	09	BRASS	NICKEL	GOLD - C	-	1.610 [40.9]	-	.562 [14.3]	25M-1NN-309-00N
1	-	34	BRASS	NICKEL	GOLD - C	-	1.610 [40.9]	-	.750 [19.1]	25M-1NN-334-00N
1	-	12	BRASS	NICKEL	GOLD - C	-	1.610 [40.9]	-	.750 [19.1]	25M-1NN-312-00N
1	-	13	BRASS	NICKEL	GOLD - C	-	1.610 [40.9]	-	.562 [14.3]	25M-1NN-313-00N
1	-	14	BRASS	NICKEL	GOLD - C	-	1.610 [40.9]	-	.562 [14.3]	25M-1NN-314-00N
1	-	21	BRASS	NICKEL	GOLD - C	-	1.610 [40.9]	-	.562 [14.3]	25M-1NN-321-00N
2	-	09	BRASS	NICKEL	GOLD - C	-	1.300 [33.0]	1.600 [40.6]	.562 [14.3]	25M-2NN-309-00N
2	-	34	BRASS	NICKEL	GOLD - C	-	1.300 [33.0]	1.600 [40.6]	.750 [19.1]	25M-2NN-334-00N
2	-	12	BRASS	NICKEL	GOLD - C	-	1.300 [33.0]	1.600 [40.6]	.750 [19.1]	25M-2NN-312-00N
2	-	13	BRASS	NICKEL	GOLD - C	-	1.300 [33.0]	1.600 [40.6]	.562 [14.3]	25M-2NN-313-00N
2	-	14	BRASS	NICKEL	GOLD - C	-	1.300 [33.0]	1.600 [40.6]	.562 [14.3]	25M-2NN-314-00N
2	-	21	BRASS	NICKEL	GOLD - C	-	1.300 [33.0]	1.600 [40.6]	.562 [14.3]	25M-2NN-321-00N



STRAIGHT JACK - CRIMP TYPE FOR FLEXIBLE CABLE

FIG.	POL (Z)	CABLE GROUP	MATERIAL	BODY PLATING	CONTACT PLATING	MOUNTING	DIM "A"	DIM "B"	DIM "C"	PART NUMBER
3	-	09	BRASS	NICKEL	GOLD - C	-	1.610 [40.9]	-	.625 [15.9]	25F-1NN-309-00N
3	-	34	BRASS	NICKEL	GOLD - C	-	1.610 [40.9]	-	.750 [19.1]	25F-1NN-334-00N
3	-	12	BRASS	NICKEL	GOLD - C	-	1.610 [40.9]	-	.750 [19.1]	25F-1NN-312-00N
3	-	13	BRASS	NICKEL	GOLD - C	-	1.610 [40.9]	-	.625 [15.9]	25F-1NN-313-00N
3	-	14	BRASS	NICKEL	GOLD - C	-	1.610 [40.9]	-	.625 [15.9]	25F-1NN-314-00N
3	-	21	BRASS	NICKEL	GOLD - C	-	1.610 [40.9]	-	.625 [15.9]	25F-1NN-321-00N

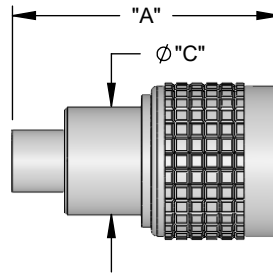


NOTES: 1. "C" CODING IN THE "CONTACT PLATING" COLUMN DESIGNATES A CAPTIVE CONTACT DESIGN.

STRAIGHT PLUG - DIRECT SOLDER FOR SEMI-RIGID CABLE

FIG.	POL. (Z)	CABLE GROUP	MATERIAL	BODY PLATING	CONTACT PLATING	MOUNTING	DIM "A"	DIM "B"	DIM "C"	PART NUMBER
1	-	04	BRASS	NICKEL	GOLD - C	-	1.410 [35.8]	-	.562 [14.3]	25M-1NN-104-00N
1	-	22	BRASS	NICKEL	GOLD - C	-	1.410 [35.8]	-	.562 [14.3]	25M-1NN-122-00N

FIG. 1

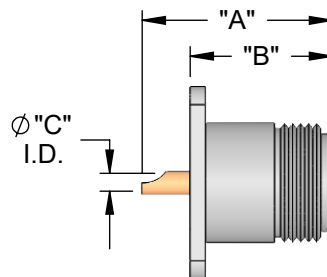
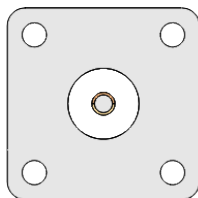


NOTES: 1. "C" CODING IN THE "CONTACT PLATING" COLUMN DESIGNATES A CAPTIVE CONTACT DESIGN.

STRAIGHT PANEL JACK RECEPTACLE - SOLDER POT CONTACT

FIG.	POL. (Z)	CABLE GROUP	MATERIAL	BODY PLATING	CONTACT PLATING	MOUNTING	DIM "A"	DIM "B"	DIM "C"	PART NUMBER
1	-	-	BRASS	NICKEL	GOLD - C	FL190	1.125 [28.6]	.875 [22.2]	.093 [2.4]	25F-1FL-000-09N

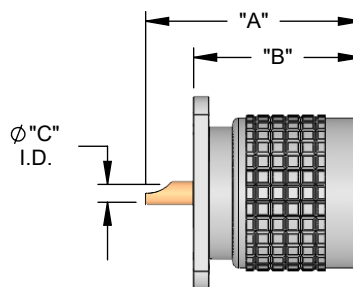
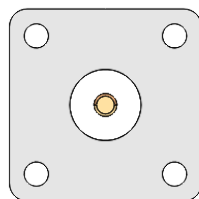
FIG. 1



STRAIGHT PANEL PLUG RECEPTACLE - SOLDER POT CONTACT

FIG.	POL. (Z)	CABLE GROUP	MATERIAL	BODY PLATING	CONTACT PLATING	MOUNTING	DIM "A"	DIM "B"	DIM "C"	PART NUMBER
2	-	-	BRASS	NICKEL	GOLD - C	FL190	1.125 [28.6]	.875 [22.2]	.093 [2.4]	25M-1FL-000-03N

FIG. 2

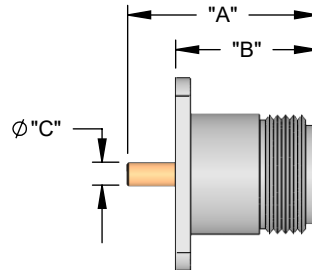
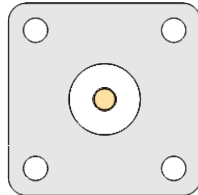


NOTES: 1. "C" CODING IN THE "CONTACT PLATING" COLUMN DESIGNATES A CAPTIVE CONTACT DESIGN.

STRAIGHT PANEL JACK RECEPTACLE - SOLDER POST CONTACT

FIG.	POL. (Z)	CABLE GROUP	MATERIAL	BODY PLATING	CONTACT PLATING	MOUNTING	DIM "A"	DIM "B"	DIM "C"	PART NUMBER
1	-	-	BRASS	NICKEL	GOLD - C	FL190	1.125 [28.6]	.875 [22.2]	.120 [3.1]	25F-1FL-000-08N

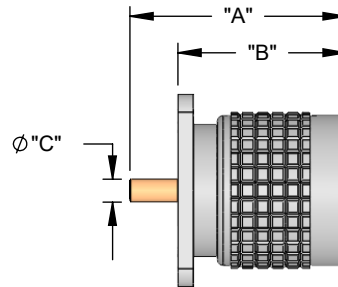
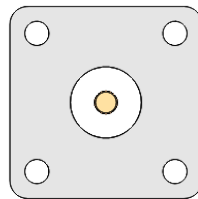
FIG. 1



STRAIGHT PANEL PLUG RECEPTACLE - SOLDER POST CONTACT

FIG.	POL. (Z)	CABLE GROUP	MATERIAL	BODY PLATING	CONTACT PLATING	MOUNTING	DIM "A"	DIM "B"	DIM "C"	PART NUMBER
2	-	-	BRASS	NICKEL	GOLD - C	FL190	1.125 [28.6]	.875 [22.2]	.120 [3.1]	25M-1FL-000-00N

FIG. 2



NOTES: 1. "C" CODING IN THE "CONTACT PLATING" COLUMN DESIGNATES A CAPTIVE CONTACT DESIGN.