

## STRAIGHT & RIGHT ANGLE PLUG - CRIMP TYPE FOR FLEXIBLE CABLE

FIG.	POL (Z)	CABLE GROUP	MATERIAL	BODY PLATING	CONTACT PLATING	MOUNTING	DIM "A"	DIM "B"	DIM "C"	PART NUMBER
1	-	01	BRASS	GOLD	GOLD - C	-	.356 [9.0]	.713 [18.1]	-	32M-1NN-301-00G
1	-	01	BRASS	NICKEL	GOLD - C	-	.356 [9.0]	.713 [18.1]	-	32M-1NN-301-00N
1	-	05	BRASS	GOLD	GOLD - C	-	.356 [9.0]	.713 [18.1]	-	32M-1NN-305-00G
1	-	05	BRASS	NICKEL	GOLD - C	-	.356 [9.0]	.713 [18.1]	-	32M-1NN-305-00N
1	-	06	BRASS	GOLD	GOLD - C	-	.356 [9.0]	.713 [18.1]	-	32M-1NN-306-00G
1	-	06	BRASS	NICKEL	GOLD - C	-	.356 [9.0]	.713 [18.1]	-	32M-1NN-306-00N
1	-	07	BRASS	GOLD	GOLD - C	-	.356 [9.0]	.713 [18.1]	-	32M-1NN-307-00G
1	-	07	BRASS	NICKEL	GOLD - C	-	.356 [9.0]	.713 [18.1]	-	32M-1NN-307-00N
2	-	01	BRASS	GOLD	GOLD - C	-	.505 [12.8]	.580 [14.7]	-	32M-2NN-301-00G
2	-	01	BRASS	NICKEL	GOLD - C	-	.505 [12.8]	.580 [14.7]	-	32M-2NN-301-00N
2	-	05	BRASS	GOLD	GOLD - C	-	.505 [12.8]	.580 [14.7]	-	32M-2NN-305-00G
2	-	05	BRASS	NICKEL	GOLD - C	-	.505 [12.8]	.580 [14.7]	-	32M-2NN-305-00N
2	-	06	BRASS	GOLD	GOLD - C	-	.505 [12.8]	.580 [14.7]	-	32M-2NN-306-00G
2	-	06	BRASS	NICKEL	GOLD - C	-	.505 [12.8]	.580 [14.7]	-	32M-2NN-306-00N
2	-	07	BRASS	GOLD	GOLD - C	-	.505 [12.8]	.580 [14.7]	-	32M-2NN-307-00G
2	-	07	BRASS	NICKEL	GOLD - C	-	.505 [12.8]	.580 [14.7]	-	32M-2NN-307-00N

FIG. 1

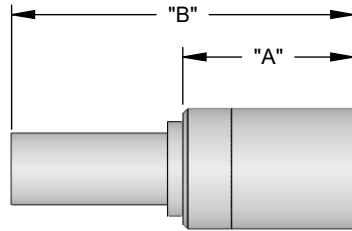
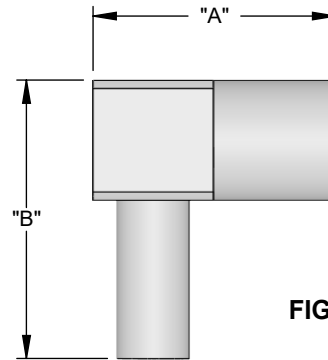


FIG. 2

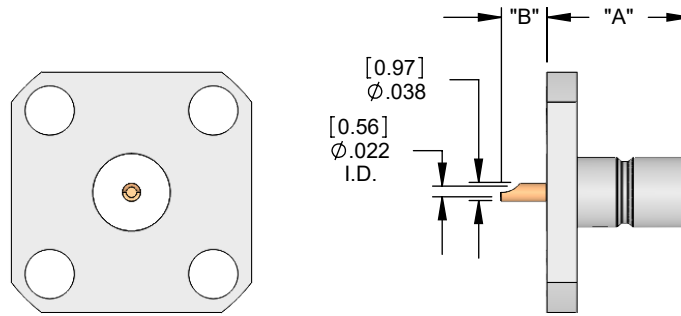


NOTES: 1. "C" CODING IN THE "CONTACT PLATING" COLUMN DESIGNATES A CAPTIVE CONTACT DESIGN.

## STRAIGHT PANEL JACK RECEPTACLE - SOLDER POT CONTACT

FIG.	POL. (Z)	CABLE GROUP	MATERIAL	BODY PLATING	CONTACT PLATING	MOUNTING	DIM "A"	DIM "B"	DIM "C"	PART NUMBER
1	-	-	BRASS	GOLD	GOLD - C	FL042	.375 [9.5]	.200 [5.1]	-	32F-1FL-000-01G
1	-	-	BRASS	NICKEL	GOLD - C	FL042	.375 [9.5]	.200 [5.1]	-	32F-1FL-000-01N

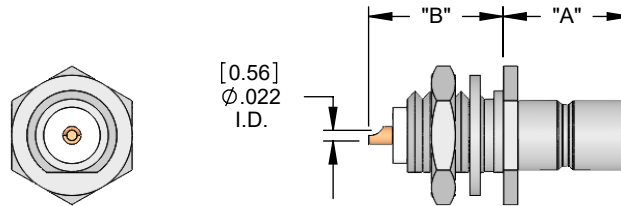
FIG. 1



## STRAIGHT PANEL JACK RECEPTACLE - SOLDER POT CONTACT

FIG.	POL. (Z)	CABLE GROUP	MATERIAL	BODY PLATING	CONTACT PLATING	MOUNTING	DIM "A"	DIM "B"	DIM "C"	PART NUMBER
2	-	-	BRASS	GOLD	GOLD - C	BK290	.265 [6.7]	.325 [8.3]	-	32F-1BK-000-00G
2	-	-	BRASS	NICKEL	GOLD - C	BK290	.265 [6.7]	.325 [8.3]	-	32F-1BK-000-00N

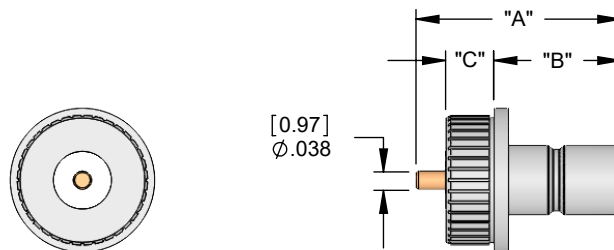
FIG. 2



## STRAIGHT PANEL JACK RECEPTACLE - SOLDER POST CONTACT

FIG.	POL. (Z)	CABLE GROUP	MATERIAL	BODY PLATING	CONTACT PLATING	MOUNTING	DIM "A"	DIM "B"	DIM "C"	PART NUMBER
3	-	-	BRASS	GOLD	GOLD - C	BK080	.265 [6.7]	.175 [4.5]	.115 [2.9]	32F-1PF-000-00G
3	-	-	BRASS	NICKEL	GOLD - C	BK080	.265 [6.7]	.175 [4.5]	.115 [2.9]	32F-1PF-000-00N

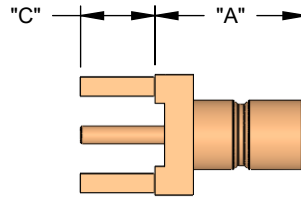
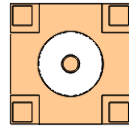
FIG. 3



### STRAIGHT PRINTED CIRCUIT BOARD JACK RECEPTACLE - THROUGH-HOLE MOUNT

FIG.	POL. (Z)	CABLE GROUP	MATERIAL	BODY PLATING	CONTACT PLATING	MOUNTING	DIM "A"	DIM "B"	DIM "C"	PART NUMBER
1	-	-	BRASS	GOLD	GOLD - C	PC050	.315 [8.0]	-	.155 [3.9]	32F-1PC-000-00G
1	-	-	BRASS	NICKEL	GOLD - C	PC050	.315 [8.0]	-	.155 [3.9]	32F-1PC-000-00N

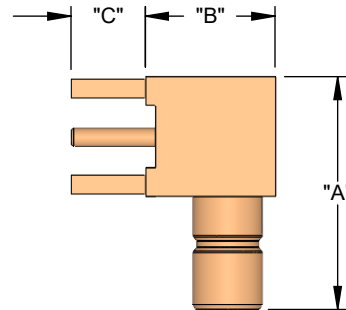
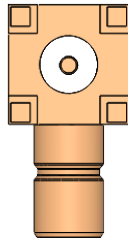
FIG. 1



### RIGHT ANGLE PRINTED CIRCUIT BOARD JACK RECEPTACLE - THROUGH-HOLE MOUNT

FIG.	POL. (Z)	CABLE GROUP	MATERIAL	BODY PLATING	CONTACT PLATING	MOUNTING	DIM "A"	DIM "B"	DIM "C"	PART NUMBER
2	-	-	BRASS	GOLD	GOLD - C	PC050	.525 [13.3]	.275 [7.0]	.155 [3.9]	32F-2PC-000-03G
2	-	-	BRASS	NICKEL	GOLD - C	PC050	.525 [13.3]	.275 [7.0]	.155 [3.9]	32F-2PC-000-03N

FIG. 2



NOTES: 1. "C" CODING IN THE "CONTACT PLATING" COLUMN DESIGNATES A CAPTIVE CONTACT DESIGN.