

GENERAL DESCRIPTION

This micro miniature size connector series is an excellent design where weight and space are vital. This connector series has a quick snap-on locking mechanism. The MCX series is used with small, semi-rigid and flexible cables. These connectors can also accommodate various PCB, bulkhead, surface, edge, and press fit mount configurations. MCX connectors are ideal for the cellular telephone, information systems and communications markets.

MATERIALS

Bodies & Other Parts: Brass per ASTM B16 or equivalent.
Female Contacts: Beryllium Copper per ASTM B196 or equivalent.
Male Contacts: Brass per ASTM B16 or equivalent.
Insulators (Dielectric): PTFE Fluorocarbon per ASTM D1710 or equivalent.

ELECTRICAL

Impedance: 50 Ohms Nominal
Frequency Range: DC-6 GHz
Insulation Resistance: 5,000 Megohms min.
Voltage Rating: 335 VRMS
Dielectric Withstanding: 1,000 VRMS at sea level
Voltage Standing Wave Ratio (VSWR): 1.30 max.
Contact Resistance:
Outer Contact: 5.0 Milliohms
Center Contact: 1.0 Milliohms

ENVIRONMENTAL

Temperature rating: -65°C to +165°C
Vibration: MIL-STD-202, Method 204
Shock: MIL-STD-202, Method 213
Thermal Shock: MIL-STD-202, Method 107
Corrosion (Salt Spray): MIL-STD-202, Method 101
Moisture Resistance: MIL-STD-202, Method 106

PLATING OPTIONS

Gold: Per MIL-G-45204, Type II, Grade C
Nickel: Per QQ-N-290, Class II
Silver: Per QQ-S-365, Type II, Grade A

MECHANICAL

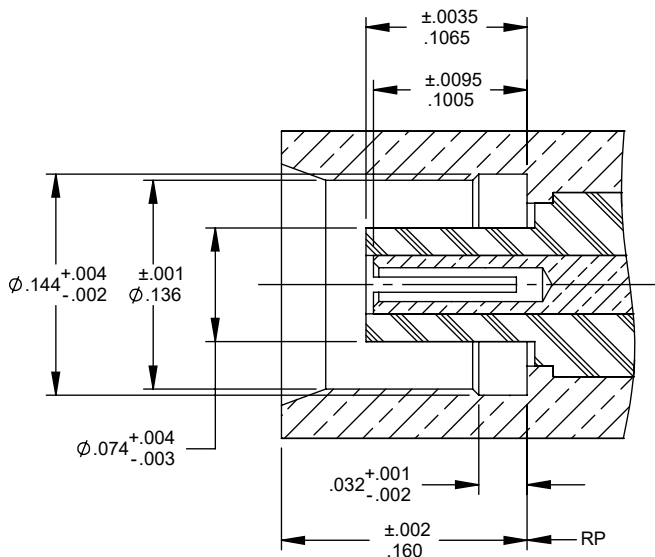
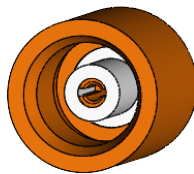
Force to Engage and Disengage:
Engagement: 6 lbs max., 2.5 lbs min.
Disengagement: 4 lbs max., 2.0 lbs min.
Mating Cycles: 500 min.

DESIGN IN ACCORDANCE WITH

CECC: 22 220
BE: ES101, ES103

JACK INTERFACE

(FEMALE CONTACT)



PLUG INTERFACE

(MALE CONTACT)

