

## STRAIGHT & RIGHT ANGLE PLUG - MILITARY CLAMP FOR FLEXIBLE CABLE

FIG.	POL (Z)	CABLE GROUP	MATERIAL	BODY PLATING	CONTACT PLATING	MOUNTING	DIM "A"	DIM "B"	DIM "C"	PART NUMBER
1	-	09	BRASS	NICKEL	GOLD - C	-	1.100 [27.9]	-	.500 [12.7]	24M-1NN-409-00N
1	-	13	BRASS	NICKEL	GOLD - C	-	1.100 [27.9]	-	.500 [12.7]	24M-1NN-413-00N
1	-	14	BRASS	NICKEL	GOLD - C	-	1.100 [27.9]	-	.500 [12.7]	24M-1NN-414-00N
1	-	21	BRASS	NICKEL	GOLD - C	-	1.100 [27.9]	-	.500 [12.7]	24M-1NN-421-00N
2	-	09	BRASS	NICKEL	GOLD - C	-	1.120 [28.5]	1.500 [38.1]	.500 [12.7]	24M-2NN-409-00N
2	-	13	BRASS	NICKEL	GOLD - C	-	1.120 [28.5]	1.500 [38.1]	.500 [12.7]	24M-2NN-413-00N
2	-	14	BRASS	NICKEL	GOLD - C	-	1.120 [28.5]	1.500 [38.1]	.500 [12.7]	24M-2NN-414-00N
2	-	21	BRASS	NICKEL	GOLD - C	-	1.120 [28.5]	1.500 [38.1]	.500 [12.7]	24M-2NN-421-00N

FIG. 1

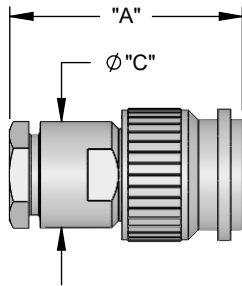
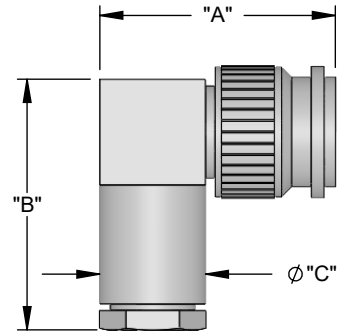


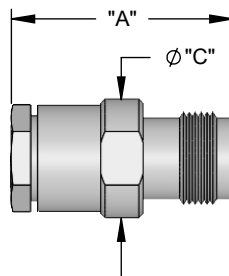
FIG. 2



## STRAIGHT JACK - MILITARY CLAMP FOR FLEXIBLE CABLE

FIG.	POL (Z)	CABLE GROUP	MATERIAL	BODY PLATING	CONTACT PLATING	MOUNTING	DIM "A"	DIM "B"	DIM "C"	PART NUMBER
3	-	09	BRASS	NICKEL	GOLD - C	-	1.050 [26.7]	-	.562 [14.3]	24F-1NN-409-00N
3	-	13	BRASS	NICKEL	GOLD - C	-	1.050 [26.7]	-	.562 [14.3]	24F-1NN-413-00N
3	-	14	BRASS	NICKEL	GOLD - C	-	1.050 [26.7]	-	.562 [14.3]	24F-1NN-414-00N
3	-	21	BRASS	NICKEL	GOLD - C	-	1.050 [26.7]	-	.562 [14.3]	24F-1NN-421-00N

FIG. 3



NOTES: 1. "C" CODING IN THE "CONTACT PLATING" COLUMN DESIGNATES A CAPTIVE CONTACT DESIGN.

## STRAIGHT & RIGHT ANGLE PLUG - CRIMP TYPE FOR FLEXIBLE CABLE

FIG.	POL (Z)	CABLE GROUP	MATERIAL	BODY PLATING	CONTACT PLATING	MOUNTING	DIM "A"	DIM "B"	DIM "C"	PART NUMBER
1	-	01	BRASS	NICKEL	GOLD - C	-	1.437 [36.5]	-	.500 [12.7]	24M-1NN-301-00N
1	-	05	BRASS	NICKEL	GOLD - C	-	1.437 [36.5]	-	.500 [12.7]	24M-1NN-305-00N
1	-	07	BRASS	NICKEL	GOLD - C	-	1.437 [36.5]	-	.500 [12.7]	24M-1NN-307-00N
2	-	09	BRASS	NICKEL	GOLD - C	-	1.200 [30.5]	-	.437 [11.1]	24M-1NN-309-00N
1	-	10	BRASS	NICKEL	GOLD - C	-	1.437 [36.5]	-	.500 [12.7]	24M-1NN-310-00N
2	-	13	BRASS	NICKEL	GOLD - C	-	1.200 [30.5]	-	.437 [11.1]	24M-1NN-313-00N
2	-	14	BRASS	NICKEL	GOLD - C	-	1.200 [30.5]	-	.437 [11.1]	24M-1NN-314-00N
2	-	21	BRASS	NICKEL	GOLD - C	-	1.200 [30.5]	-	.437 [11.1]	24M-1NN-321-00N
3	-	09	BRASS	NICKEL	GOLD - C	-	1.120 [28.5]	1.500 [38.1]	.500 [12.7]	24M-2NN-309-00N
3	-	13	BRASS	NICKEL	GOLD - C	-	1.120 [28.5]	1.500 [38.1]	.500 [12.7]	24M-2NN-313-00N
3	-	14	BRASS	NICKEL	GOLD - C	-	1.120 [28.5]	1.500 [38.1]	.500 [12.7]	24M-2NN-314-00N
3	-	21	BRASS	NICKEL	GOLD - C	-	1.120 [28.5]	1.500 [38.1]	.500 [12.7]	24M-2NN-321-00N

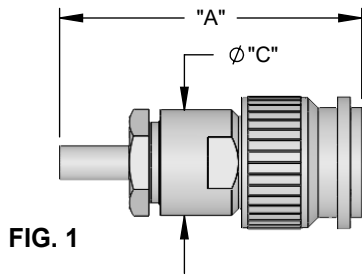


FIG. 1

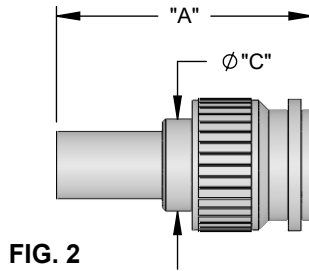


FIG. 2

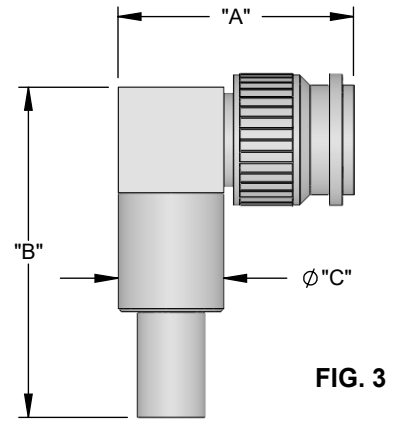


FIG. 3

## STRAIGHT JACK - CRIMP TYPE FOR FLEXIBLE CABLE

FIG.	POL (Z)	CABLE GROUP	MATERIAL	BODY PLATING	CONTACT PLATING	MOUNTING	DIM "A"	DIM "B"	DIM "C"	PART NUMBER
4	-	09	BRASS	NICKEL	GOLD - C	-	1.200 [30.5]	-	.562 [14.3]	24F-1NN-309-00N
4	-	13	BRASS	NICKEL	GOLD - C	-	1.200 [30.5]	-	.562 [14.3]	24F-1NN-313-00N
4	-	14	BRASS	NICKEL	GOLD - C	-	1.200 [30.5]	-	.562 [14.3]	24F-1NN-314-00N
4	-	21	BRASS	NICKEL	GOLD - C	-	1.200 [30.5]	-	.562 [14.3]	24F-1NN-321-00N

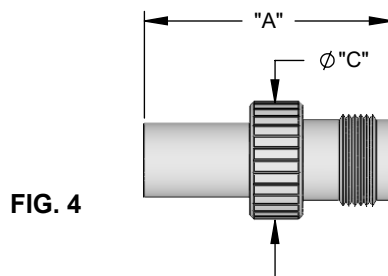


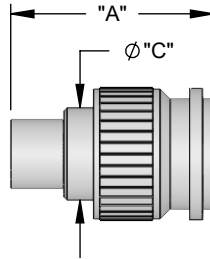
FIG. 4

NOTES: 1. "C" CODING IN THE "CONTACT PLATING" COLUMN DESIGNATES A CAPTIVE CONTACT DESIGN.

## STRAIGHT PLUG - DIRECT SOLDER FOR SEMI-RIGID CABLE

FIG.	POL. (Z)	CABLE GROUP	MATERIAL	BODY PLATING	CONTACT PLATING	MOUNTING	DIM "A"	DIM "B"	DIM "C"	PART NUMBER
1	-	04	BRASS	NICKEL	GOLD - C	-	1.000 [25.4]	-	.437 [11.1]	24M-1NN-104-00N
1	-	22	BRASS	NICKEL	GOLD - C	-	1.000 [25.4]	-	.437 [11.1]	24M-1NN-122-00N

FIG. 1

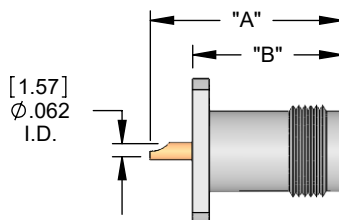
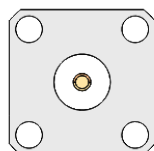


NOTES: 1. "C" CODING IN THE "CONTACT PLATING" COLUMN DESIGNATES A CAPTIVE CONTACT DESIGN.

## STRAIGHT PANEL JACK RECEPTACLE - SOLDER POT CONTACT

FIG.	POL. (Z)	CABLE GROUP	MATERIAL	BODY PLATING	CONTACT PLATING	MOUNTING	DIM "A"	DIM "B"	DIM "C"	PART NUMBER
1	-	-	BRASS	NICKEL	GOLD - C	FL130	.910 [23.1]	.710 [18.0]	-	24F-1FL-000-01N

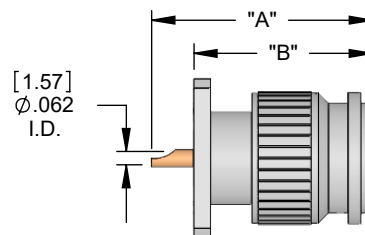
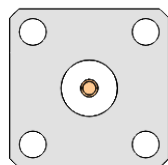
FIG. 1



## STRAIGHT PANEL PLUG RECEPTACLE - SOLDER POT CONTACT

FIG.	POL. (Z)	CABLE GROUP	MATERIAL	BODY PLATING	CONTACT PLATING	MOUNTING	DIM "A"	DIM "B"	DIM "C"	PART NUMBER
2	-	-	BRASS	NICKEL	GOLD - C	FL170	1.225 [31.1]	.870 [22.1]	-	24M-1FL-000-01N

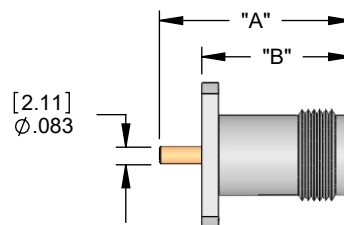
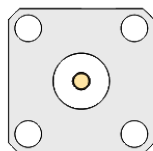
FIG. 2



## STRAIGHT PANEL JACK RECEPTACLE - SOLDER POST CONTACT

FIG.	POL. (Z)	CABLE GROUP	MATERIAL	BODY PLATING	CONTACT PLATING	MOUNTING	DIM "A"	DIM "B"	DIM "C"	PART NUMBER
3	-	-	BRASS	NICKEL	GOLD - C	FL130	.910 [23.1]	.710 [18.0]	-	24F-1FL-000-00N

FIG. 3



## STRAIGHT PANEL PLUG RECEPTACLE - SOLDER POST CONTACT

FIG.	POL. (Z)	CABLE GROUP	MATERIAL	BODY PLATING	CONTACT PLATING	MOUNTING	DIM "A"	DIM "B"	DIM "C"	PART NUMBER
4	-	-	BRASS	NICKEL	GOLD - C	FL170	1.225 [31.1]	.870 [22.1]	-	24M-1FL-000-00N

FIG. 4

