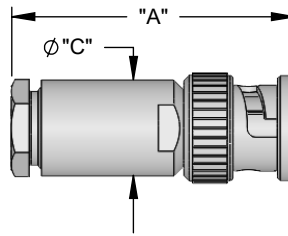


STRAIGHT PLUG - MILITARY CLAMP FOR FLEXIBLE CABLE

FIG.	POL (Z)	CABLE GROUP	MATERIAL	BODY PLATING	CONTACT PLATING	MOUNTING	DIM "A"	DIM "B"	DIM "C"	PART NUMBER
1	-	17	BRASS	NICKEL	GOLD - C	-	1.437 [36.5]	-	.500 [12.7]	31M-1NN-417-00N
1	-	18	BRASS	NICKEL	GOLD - C	-	1.437 [36.5]	-	.500 [12.7]	31M-1NN-418-00N
1	-	20	BRASS	NICKEL	GOLD - C	-	1.437 [36.5]	-	.500 [12.7]	31M-1NN-420-00N
1	-	32	BRASS	NICKEL	GOLD - C	-	1.437 [36.5]	-	.500 [12.7]	31M-1NN-432-00N
1	-	33	BRASS	NICKEL	GOLD - C	-	1.437 [36.5]	-	.500 [12.7]	31M-1NN-433-00N

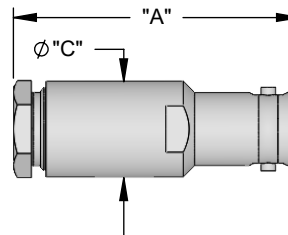
FIG. 1



STRAIGHT JACK - MILITARY CLAMP FOR FLEXIBLE CABLE

FIG.	POL (Z)	CABLE GROUP	MATERIAL	BODY PLATING	CONTACT PLATING	MOUNTING	DIM "A"	DIM "B"	DIM "C"	PART NUMBER
2	-	17	BRASS	NICKEL	GOLD - C	-	1.437 [36.5]	-	.500 [12.7]	31F-1NN-417-00N
2	-	18	BRASS	NICKEL	GOLD - C	-	1.437 [36.5]	-	.500 [12.7]	31F-1NN-418-00N
2	-	20	BRASS	NICKEL	GOLD - C	-	1.437 [36.5]	-	.500 [12.7]	31F-1NN-420-00N
2	-	32	BRASS	NICKEL	GOLD - C	-	1.437 [36.5]	-	.500 [12.7]	31F-1NN-432-00N
2	-	33	BRASS	NICKEL	GOLD - C	-	1.437 [36.5]	-	.500 [12.7]	31F-1NN-433-00N

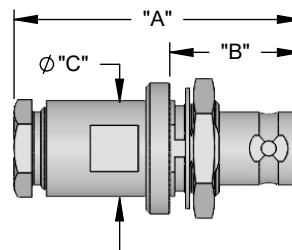
FIG. 2



STRAIGHT PANEL JACK - MILITARY CLAMP FOR FLEXIBLE CABLE

FIG.	POL (Z)	CABLE GROUP	MATERIAL	BODY PLATING	CONTACT PLATING	MOUNTING	DIM "A"	DIM "B"	DIM "C"	PART NUMBER
3	-	17	BRASS	NICKEL	GOLD - C	BK350	1.437 [36.5]	.680 [17.3]	.500 [12.7]	31F-1BK-417-00N
3	-	18	BRASS	NICKEL	GOLD - C	BK350	1.437 [36.5]	.680 [17.3]	.500 [12.7]	31F-1BK-418-00N
3	-	20	BRASS	NICKEL	GOLD - C	BK350	1.437 [36.5]	.680 [17.3]	.500 [12.7]	31F-1BK-420-00N
3	-	32	BRASS	NICKEL	GOLD - C	BK350	1.437 [36.5]	.680 [17.3]	.500 [12.7]	31F-1BK-432-00N
3	-	33	BRASS	NICKEL	GOLD - C	BK350	1.437 [36.5]	.680 [17.3]	.500 [12.7]	31F-1BK-433-00N

FIG. 3

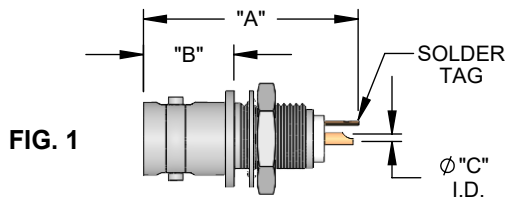


NOTES:

1. "C" CODING IN THE "CONTACT PLATING" COLUMN DESIGNATES A CAPTIVE CONTACT DESIGN.

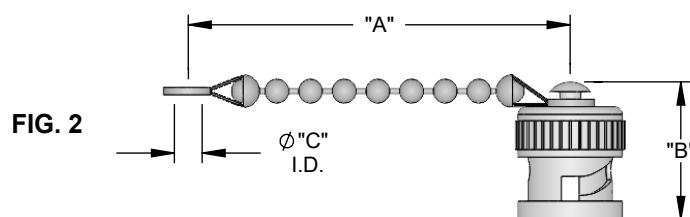
STRAIGHT PANEL JACK RECEPTACLE - SOLDER POT CONTACT

FIG.	POL (Z)	CABLE GROUP	MATERIAL	BODY PLATING	CONTACT PLATING	MOUNTING	DIM "A"	DIM "B"	DIM "C"	PART NUMBER
1	-	-	BRASS	NICKEL	GOLD - C	BK330	1.118 [28.4]	.471 [12.0]	.039 [1.0]	31F-1BK-000-00N



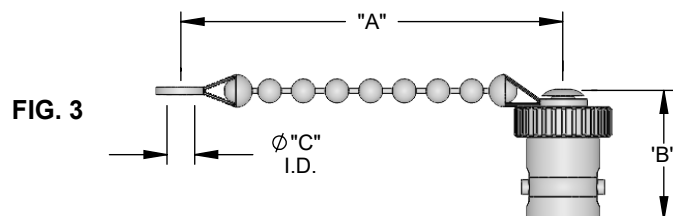
DUST CAP PLUG WITH CHAIN

FIG.	POL (Z)	CABLE GROUP	MATERIAL	BODY PLATING	CONTACT PLATING	MOUNTING	DIM "A"	DIM "B"	DIM "C"	PART NUMBER
2	-	-	BRASS	NICKEL	-	-	3.000 [76.2]	.650 [16.5]	.144 [3.65]	28M-1CH-000-00N



DUST CAP JACK WITH CHAIN

FIG.	POL (Z)	CABLE GROUP	MATERIAL	BODY PLATING	CONTACT PLATING	MOUNTING	DIM "A"	DIM "B"	DIM "C"	PART NUMBER
3	-	-	BRASS	NICKEL	-	-	3.000 [76.2]	.675 [17.1]	.144 [3.65]	28F-1CH-000-00N



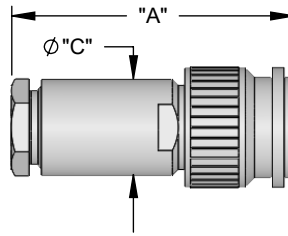
NOTES:

- "C" CODING IN THE "CONTACT PLATING" COLUMN DESIGNATES A CAPTIVE CONTACT DESIGN.

STRAIGHT PLUG - MILITARY CLAMP FOR FLEXIBLE CABLE

FIG.	POL (Z)	CABLE GROUP	MATERIAL	BODY PLATING	CONTACT PLATING	MOUNTING	DIM "A"	DIM "B"	DIM "C"	PART NUMBER
1	-	17	BRASS	NICKEL	GOLD - C	-	1.437 [36.5]	-	.500 [12.7]	33M-1NN-417-00N
1	-	18	BRASS	NICKEL	GOLD - C	-	1.437 [36.5]	-	.500 [12.7]	33M-1NN-418-00N
1	-	20	BRASS	NICKEL	GOLD - C	-	1.437 [36.5]	-	.500 [12.7]	33M-1NN-420-00N
1	-	32	BRASS	NICKEL	GOLD - C	-	1.437 [36.5]	-	.500 [12.7]	33M-1NN-432-00N
1	-	33	BRASS	NICKEL	GOLD - C	-	1.437 [36.5]	-	.500 [12.7]	33M-1NN-433-00N

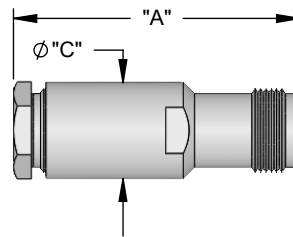
FIG. 1



STRAIGHT JACK - MILITARY CLAMP FOR FLEXIBLE CABLE

FIG.	POL (Z)	CABLE GROUP	MATERIAL	BODY PLATING	CONTACT PLATING	MOUNTING	DIM "A"	DIM "B"	DIM "C"	PART NUMBER
2	-	17	BRASS	NICKEL	GOLD - C	-	1.437 [36.5]	-	.500 [12.7]	33F-1NN-417-00N
2	-	18	BRASS	NICKEL	GOLD - C	-	1.437 [36.5]	-	.500 [12.7]	33F-1NN-418-00N
2	-	20	BRASS	NICKEL	GOLD - C	-	1.437 [36.5]	-	.500 [12.7]	33F-1NN-420-00N
2	-	32	BRASS	NICKEL	GOLD - C	-	1.437 [36.5]	-	.500 [12.7]	33F-1NN-432-00N
2	-	33	BRASS	NICKEL	GOLD - C	-	1.437 [36.5]	-	.500 [12.7]	33F-1NN-433-00N

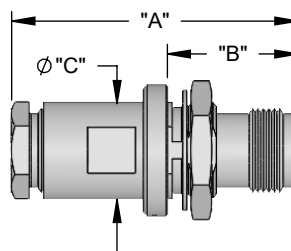
FIG. 2



STRAIGHT PANEL JACK - MILITARY CLAMP FOR FLEXIBLE CABLE

FIG.	POL (Z)	CABLE GROUP	MATERIAL	BODY PLATING	CONTACT PLATING	MOUNTING	DIM "A"	DIM "B"	DIM "C"	PART NUMBER
3	-	17	BRASS	NICKEL	GOLD - C	BK350	1.437 [36.5]	.680 [17.3]	.500 [12.7]	33F-1BK-417-00N
3	-	18	BRASS	NICKEL	GOLD - C	BK350	1.437 [36.5]	.680 [17.3]	.500 [12.7]	33F-1BK-418-00N
3	-	20	BRASS	NICKEL	GOLD - C	BK350	1.437 [36.5]	.680 [17.3]	.500 [12.7]	33F-1BK-420-00N
3	-	32	BRASS	NICKEL	GOLD - C	BK350	1.437 [36.5]	.680 [17.3]	.500 [12.7]	33F-1BK-432-00N
3	-	33	BRASS	NICKEL	GOLD - C	BK350	1.437 [36.5]	.680 [17.3]	.500 [12.7]	33F-1BK-433-00N

FIG. 3

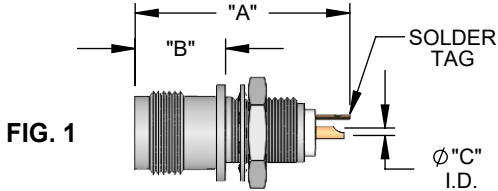


NOTES:

1. "C" CODING IN THE "CONTACT PLATING" COLUMN DESIGNATES A CAPTIVE CONTACT DESIGN.

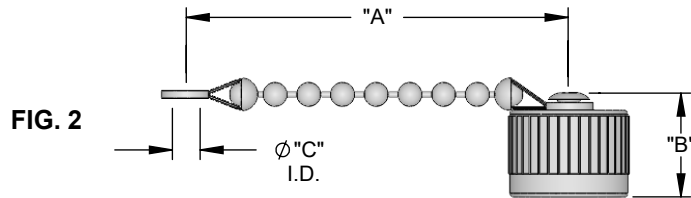
STRAIGHT PANEL JACK RECEPTACLE - SOLDER POT CONTACT

FIG.	POL (Z)	CABLE GROUP	MATERIAL	BODY PLATING	CONTACT PLATING	MOUNTING	DIM "A"	DIM "B"	DIM "C"	PART NUMBER
1	-	-	BRASS	NICKEL	GOLD - C	BK330	1.118 [28.4]	.471 [12.0]	.039 [1.0]	33F-1BK-000-00N



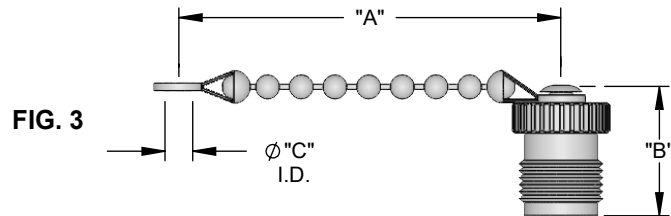
DUST CAP PLUG WITH CHAIN

FIG.	POL (Z)	CABLE GROUP	MATERIAL	BODY PLATING	CONTACT PLATING	MOUNTING	DIM "A"	DIM "B"	DIM "C"	PART NUMBER
2	-	-	BRASS	NICKEL	-	-	3.000 [76.2]	.540 [13.7]	.144 [3.65]	24M-1CH-000-00N



DUST CAP JACK WITH CHAIN

FIG.	POL (Z)	CABLE GROUP	MATERIAL	BODY PLATING	CONTACT PLATING	MOUNTING	DIM "A"	DIM "B"	DIM "C"	PART NUMBER
3	-	-	BRASS	NICKEL	-	-	3.000 [76.2]	.675 [17.1]	.144 [3.65]	24F-1CH-000-00N



NOTES:

1. "C" CODING IN THE "CONTACT PLATING" COLUMN DESIGNATES A CAPTIVE CONTACT DESIGN.